



DURABLE
RE-USE
CONCEPT

MULTI-OPTIC RECESSED FIXTURE

ZKR2-ST

Silver colour frame and rings.



The front ring locks the lamp

BASIC

SIZE:
107 X 202 X 110 CM

WARRANTY:
5 YEARS

1

TYPE

Rectangular recessed fixture for two adjustable GU10 lamps.

2

CHARACTERISTICS

Widely used in retail installations, it meets the needs of those who prefer a recessed ceiling luminaire with replaceable lamps. It offers the advantage of having both multidirectional and adjustable light beams from +15° to -15° in the vertical plane.

3

Houses PAR16 lamps; compatible with all GU10 lamps in the Duralamp catalogue. Max 15W x 2.

4

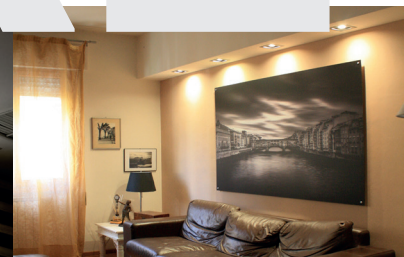
MATERIAL

Inner black painted aluminium body with silver colour frame. Choice of colour of the rings.

ZKR2-STB



ZKR2

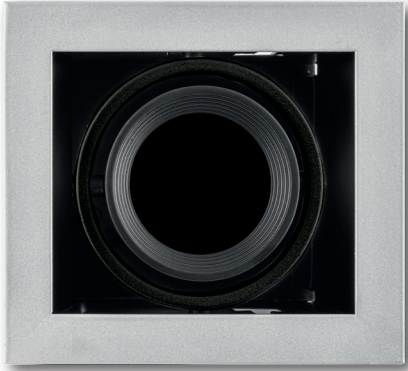


Silver colour frame and black rings.

In this picture with MULTI100 GU10.

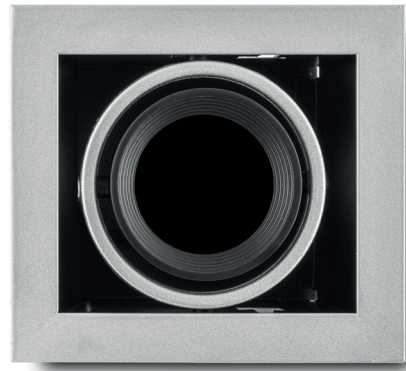
SINGLE-OPTIC RECESSED FIXTURE

ZKR1-STB



Silver colour frame and black ring.

ZKR1-ST



Silver colour frame and rings.

BASIC

SIZE:
110 X 110 X 125 CM

WARRANTY:
5 YEARS

1

TYPE

Rectangular recessed fixture for one adjustable GU10 lamp.

2

CHARACTERISTICS

Widely used in retail installations, it meets the needs of those who prefer a recessed ceiling luminaire with replaceable lamps. It offers the advantage of having both multidirectional and adjustable light beams from +15° to -15° in the vertical plane.

3

Houses PAR16 lamps; compatible with all GU10 lamps in the Duralamp catalogue.

4

MATERIAL

Inner black painted aluminium body with silver colour frame. Choice of colour of the rings.

ZKR1

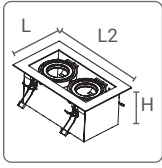
5

MOUNTING

Recessed with the special galvanised aluminium springs. Complete with GU10 lamp holder.

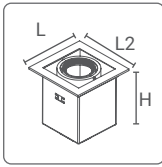


BASIC	220-240V 50/60Hz	IP20 VI IP23 VO		-25° +45°C		G5/ h24
--------------	---------------------	--------------------	--	---------------	--	------------



art.		L	L2	H			
ZKR2-ST		107	202	110	95x180	8011905 935269	1
ZKR2-STB		107	202	110	95x180	981693	1

BASIC	220-240V 50/60Hz	IP20		-25° +45°C	G5/ h24
--------------	---------------------	------	--	---------------	------------



art.		L	L2	H			
ZKR1-ST		110	110	125	95x95	8011905 975845	1
ZKR1-STB		110	110	125	95x95	981693	1

The luminaire does not include the lamp: choose the most suitable lamp from our range.
For professional use we suggest items 28530LL/28540LL.

MULTI GU10LL



PLUS	220-240V 50/60Hz	Ra>80		50000h L70	IP20	-25° +35°C	G5/ h24	
-------------	---------------------	-------	--	---------------	------	---------------	------------	--

art.	W		lm	cd	K		Ø	H		
28530LL	5,5	GU10	665	820	3000	38°	50	55	8011905 979911	10
28540LL	5,5	GU10	700	850	4000	38°	50	55	979928	10

• MOQ

Please check the complete lamps' range on:



MULTI GU10: 38° - 50°



MULTI 100: 100°



XSPOT: 10°



SIRIUS-P

